

# UPMC HILLMAN CANCER CENTER ACADEMY

**June 20 – August 5\*** (subject to change)

*7-8 weeks of cutting-edge cancer research and STEM career preparation for high school*



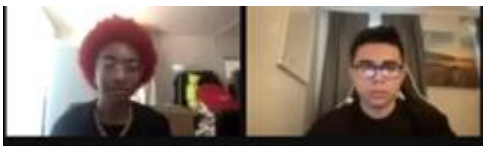
### Students will...

- Have a unique, **authentic, and cutting edge research project.**
- Receive **mentorship** from Pitt faculty and researchers.
- Participate in career and professional development activities.



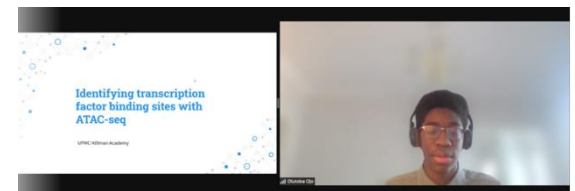
### Application is open now!

- Open to all High school students over 15.
- **Free for local students.**
- **\$2400 Compensation available for students from underrepresented backgrounds. \*(by NIH definitions)**
- Program may be in-person, hybrid, or virtual.
- **Applications due February 21st**



### 7 Unique Research Sites:

- Ophthalmology (New Site!)
- Cancer Biology
- Computational Biology
- Computational and Systems Biology and Biomedical Informatics
- Immunology and Cancer Immunotherapy
- Technology Drive X
- Women's Cancer Research Center



### Hillman YES Academy (2-Years)

- **Open to underrepresented students.**
- **\$7200** in compensation over 2 years.
- Guaranteed admission for 2 summers.
- Events and mentorship during the school year to help with science fairs, college application, and more!

<http://hillmanacademy.upmc.com/> -Website

<https://hillmanacademy.smapply.io/> - Application

Optional Webinar 1/11 @ 5PM (link on application and website)

<https://www.youtube.com/watch?v=IUmb0Vea-0w&t=19s> – ASL Video

For questions, comments, or more information please contact our Program Coordinator, Solomon